

# Bauer

Emeralds 

*E.S.T. 1.893*



Colombian emeralds are testament to a naturally rich and biodiverse country, with the gemstones conjuring up different corners of Colombia, from the many shades of green throughout the Amazon Rainforest, to a dash of blue from its two oceanic coastlines.

But perhaps most of all, a Colombian emerald embodies the spirit, the culture and the magical realism of Colombia.

To wear a Bauer emerald is to showcase Colombia's natural beauty in an exquisitely crafted jewel with an unique heritage of 130 years.



# COLOMBIAN EMERALDS

Colombian Emeralds have been found within the mountains that have embraced the Boyacá region for millennia. Legend has it that emeralds were born from the tears of Fura, one of the first Muisca people to inhabit the region, who was mourning the death of her husband Tena.

Fura and Tena are immortalized as the names of the two most iconic mountains in Boyacá, where the Muzo mines are located. The different shades of green across the landscape reflect the tonalities of the Colombian emeralds that are allocated under the surface.

Colombian emeralds are celebrated around the world for their vivid beauty, clarity, and quality.



Fura and Tena mountains. Boyacá, Colombia

# ORIGINS & SYMBOLISM



The first emeralds were said to hail from Ancient Egypt, around 3500 BC. Centuries later, when the Spaniards came upon them in South America, emeralds were established as one of the world's most precious and desirable gems.

The vivid green of Colombia's emeralds make them stand out among other precious and semi-precious stones such as diamonds, rubies, and sapphires. Emeralds are one of the most coveted, desired, and popular jewels worldwide.



Delicate pear-shaped emeralds dangle from splendid pear-shape and brilliant cut diamonds.  
**7.60 CARATS**



Stud earrings with classic octagonal cut, emerald surrounded by a brilliant cut diamond pavé.



Stud earrings with round emeralds and brilliant cut diamonds.

# COLOR: Green



The color green is highly symbolic in many cultures, making emeralds particularly desirable.

In some Asian countries, for example, green is a sign of good luck. In other countries and cultures, the color green also represents fertility, new life, abundance, hope, and prosperity.

Others claim that emeralds bring peace, serenity, and harmony to those who wear them; promoting balance, wisdom, and patience by enabling the wearer to both give and receive unconditional love.



1. Emeralds floating below a thin row of brilliant cut diamonds.
2. A triad of oval cut emeralds form a perfect balance, accompanied by striking diamonds glistening on **18K WHITE GOLD. EMERALD, CARAT WEIGHT 93.14.**
3. A ring with a modern design combines a pear cut emerald surrounded by brilliant cut diamonds.
4. A dazzling diamond is paired by a fine emerald set in 4 prongs in **18K WHITE GOLD.**
5. Dangling from each other, the brilliant cut emeralds completely capture the light from the inside, and intensify the depth of its color thanks to the diamonds that surround it. **EMERALDS, CARAT WEIGHT 5.31.**
6. 18K White gold ring features a brilliant cut emerald surrounded by a beautiful pavé of diamonds.



Considered a timeless jewel, this splendid rivi re necklace features brilliant cut emeralds, which allow to highlight the depth of its vibrant green color on 18K yellow gold.

**EMERALD, CARAT WEIGHT 31.82.**



# CLASSIFYING AN EMERALD

## THE 4 C'S

Alongside diamonds, emeralds are classified using the 4C model.

### COLOR

The stone's hue.



### CLARITY

The stone's lack of impurities within.

### CUT

The stone's given shape and correct proportions.

### CARATS

The stone's size expressed in carat weight.

**CHARM**, beyond any doubt, is the unofficial fifth 'C'. Finesse, uniquely vibrant color, and relative scarcity guarantee that emeralds can reach high prices and increase their value over time.



Rivière necklace made up of a brilliant cut diamond pattern that carefully holds fine emerald cut gems.  
**EMERALDS, CARAT WEIGHT 3.88.**  
**DIAMONDS, CARAT WEIGHT 6.03**

To protect the fragile beauty of an emerald's shine and to diminish inner natural imperfections, some gemologists recommend that stones receive a few drops of cedar oil or liquid resin. The better the quality of the gem, the less intervention is required.

Emeralds are formed under intense hydrothermal pressure that can lead to the creation of small fissures called inclusions, also referred to as 'garden' because they resemble moss or foliage.

In general, the finer the quality of the emerald, the fewer the inclusions it has. The very existence of 'gardens' is also one of their most distinctive characteristics, proof of their authentic and natural provenance. They are best viewed in daylight, rather than artificial light.

As mentioned before, a few drops of oil will be added to stones to reduce the visibility of these inner fissures and preserve their natural beauty acting as an additional protection agent. This is a delicate process that needs to be carefully executed, which is why it is so important to work with trusted jewelers who will know what steps should be taken to enhance the emerald, rather than compromise its quality and damage the gem. Gemological certificates normally state the type of treatment the emerald has received.



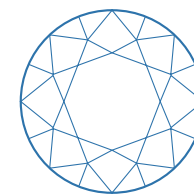
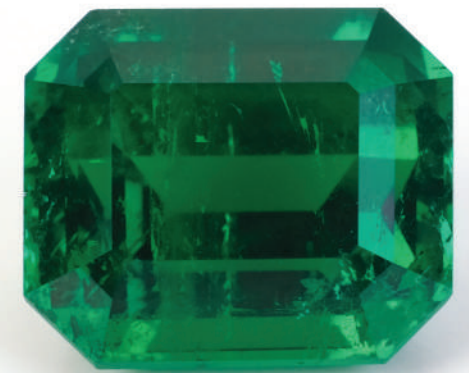




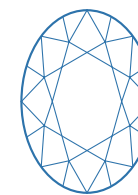
# CUTTING AN EMERALD

Most Colombian emeralds are cut octagonally, which gave recognition to the so-called 'emerald cut' of gemstones. But in fact, emeralds can be cut in several ways: the key is to pick the shape that best enhances the natural qualities of the gem.

Today, most emeralds are still hand-cut and polished. Only the most skilled cutters can look at a rough stone and identify the cut and polish that will best showcase its qualities and bring out the gem's 'life, fire, and shine'. This is why a fine Colombian emerald can easily be worth more per carat than diamonds.



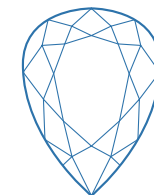
BRILLANT



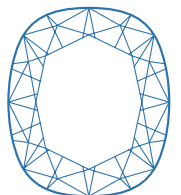
OVAL



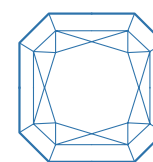
MARQUISE



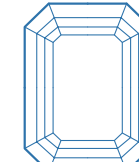
PEAR



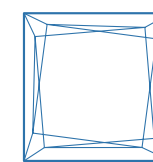
CUSHION



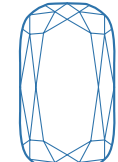
RADIANT



EMERALD



PRINCESS



ASHOKA

# COLOMBIA: THE WORLD'S PRIMARY EMERALD PRODUCER



ASHOKA® diamonds enhance the emerald center stone.

At the heart of Colombia's Boyacá region, 200km northeast of Bogotá, lies the small town of Muzo. This unassuming town is where the world's finest emeralds can be found, characterized by their distinctive vivid green color. Nearby, Chivor and other mines also produce high-quality emeralds.

Today, Colombian emeralds account for approximately 80% of the global emerald market, making Colombia the primary producer both in terms of quantity and – more importantly – quality.

When admiring and purchasing a Colombian emerald, one should see them, not only as a product of nature but also a window into the past, a tribute to the elements that have made it and the land that has borne it.



1



2



3



4

1. Baguette cut diamonds complement a perfectly shaped emerald. **EMERALD, CARAT WEIGHT 2.78. DIAMONDS, CARAT WEIGHT 0.60.** 2. Iconic piece starring a majestic pear cut emerald, dangles from gleaming heart cut diamonds with soft contours and inherent attractiveness. **EMERALD, CARAT WEIGHT 10.58. DIAMONDS, CARAT WEIGHT 17.72.** 3. Oval shape emerald of **1.52 CARATS** set in a stylist way. 4. Two cushion cut emeralds dangle from refined ASHOKA® diamonds. **EMERALDS, CARAT WEIGHT 10.78. DIAMONDS CARAT WEIGHT 0.93.**

# FAMOUS EMERALDS

Colombian emeralds played their prestigious part in history, with important jewels featured in Her Majesty Queen Elizabeth II's Crown Jewels, as well as other desired collections.

With **453 stones**, equivalent to **1521 carats**, this emerald encrusted jewel includes the 45 carat Atahualpa Emerald, named after the last Inca Emperor. *The Crown* is on display at New York's Metropolitan Museum of Art.



Crown of the Virgin of the Immaculate Conception, known as the Crown of the Andes. Ca. 1660 (diadem) and ca. 1770 (arches) Purchase, Lila Acheson Wallace Gift, Acquisitions Fund and Mary Trumbull Adams Fund, 2015 2015.437  
The Metropolitan Museum of Art.



The original **107.67 carats** rectangular emerald that once belonged to Catherine the Great, was sold to Cartier in 1927. It was later recut into a pear shape gem of **75.63 carats** creating the iconic *Catherine the Great Emerald Necklace*.

Some say she would wear her emeralds as a strategic move, a form of intimidation and a display of strength when attending important meetings.

*The Chalk Emerald* ring exhibits a deep green gem with **37.82-carats**. It is displayed at the National Gem and Mineral Collection at the National Museum of Natural History in Washington, D.C.



Photo credit: The Metropolitan Museum of Art.

Photo credit: CHRISTIE'S and Smithsonian.



# JOYERÍA BAUER

## EMERALD

### EXPERTS SINCE

# 1893

When it comes to buying an emerald; provenance and expertise are of paramount importance.

Since established in 1893, Bauer has always been a pioneer in the jewelry industry in Colombia and Latin America. While constant innovation, attention to detail and insight have all allowed Bauer to remain at the vanguard in its field in Latin America, its great customer service has been the secret to the success of the company.

Today, Bauer has consolidated its presence in Colombia and Ecuador, in the cities of Bogotá, Cartagena, Quito and Guayaquil.

Jewelry pieces manufactured by Bauer have always been characterized by their modern aesthetics and great quality. Ever since its beginnings, master jewelers at Bauer have been working in an exemplary manner gold, platinum and all types of precious stones.

Bauer has been working with Colombia's top emerald producers for over 130 years. Bauer, along with successive generations of designers and gemstone specialists, delivers their experience in selecting only the finest gems that are transformed into stunning jewelry.

Bauer's contemporary designs are timeless. Throughout countless collections of emerald jewels, Bauer has showcased the luxury of Colombia to national and international audiences, becoming global ambassadors for this emblematic gemstone.

Colombian emeralds are a testament to a naturally rich and biodiverse country. Emeralds conjure different corners of Colombia: from the many shades of green throughout the Amazon Rainforest, to a dash of blue from its two oceanic coastlines.

**A COLOMBIAN EMERALD EMBODIES THE SPIRIT, CULTURE, AND MAGICAL REALISM OF COLOMBIA.** TO WEAR A BAUER EMERALD IS TO SHOWCASE COLOMBIA'S NATURAL BEAUTY IN AN EXQUISITELY CRAFTED JEWEL WITH AN UNIQUE HERITAGE OF 130 YEARS.



**1.** Suspended as if it was a drop, hangs a pear cut emerald, enhanced by an edge of brilliant cut diamonds. **EMERALD, CARAT WEIGHT 5.22.** **2.** Emerald total weight **1.49 CARATS.** **3.** This solitaire ring in 18k white gold features a diamond bezel set emerald, supported by three rows of diamonds on each side. **EMERALD, CARAT WEIGHT 3.40. DIAMONDS, CARAT WEIGHT 1.50.**



1. A single emerald polished in emerald cut, shines along diamonds of **18K WHITE GOLD**.  
2. Lucid pear cut emerald is surrounded by brilliant cut diamonds.



Magnificent brilliant cut emeralds surrounded by a diamond ring.



Emerald cut stud earrings and brilliant cut diamonds.



1.86 carat emerald and pavé diamond hoop in 18k white gold.



This magnificent ring features a baroque style setting on 18k white gold and yellow gold nails. Emerald, carat weight 15.67. Diamonds, carat weight 0.76.



Emerald cut emeralds set in 18k white gold.



Pair of unique set in a modern design by Bauer with diamonds and pear cut emeralds.

# Bauer

*Desde 1.893*

## COLOMBIA

Bogotá

Centro 93. Local 215  
Centro Andino. Local 143  
+57 601 2574442

Cartagena

Hotel Charleston  
Santa Teresa Lobby  
+57 315 2196026



## ECUADOR

Quito

C.C Paseo San Francisco  
Local 231  
+593 2 392 2175

Guayaquil

Plaza Lagos  
Edificio Rambla  
Piso 2. Oficina 2-2  
+593 99 945 3692

[www.bauer.com.co](http://www.bauer.com.co) | [www.bauer.com.ec](http://www.bauer.com.ec)

 Joyería Bauer  @joyeriabauer